



PRO Transform Manager

Overview

PRO Transform Manager is a queue manager that automates process execution while concurrently routing the output data files to directories, printers and web sites.

Data or print files are submitted to **PRO Transform Manager**, and then are known as jobs. Jobs are selected from Input Queues, automatically processing according to the instructions for that Queue and then routed to another queue or Output Destination. Output Destinations can be printers, disk files or FTP servers.

Support is provided for multiple input print file formats, target formats, printers and environments where there are different execution parameters for different applications as well as other special integration requirements.

PRO Transform Manager is a cross-platform multi-threading system, which can process any number of processes concurrently. This makes it scalable from small to larger environments.

PRO Transform Manager is designed to work with any of the **PRO suite** of products. These software products can convert print files from one format to another, extract data from print files, split files into subdocument files, index print files and convert files into PDFs. PRO Transform Manager can also support other tasks, scripts and programs which may manipulate or convert the input files. These are called Transform Processes or just Processes.

How It Works

Files are placed into Input Queues by copying them to a directory which is available to **PRO Transform Manager**. When **PRO Transform Manager** finds a file in a watched directory, it is added to the Input Queue. When a Transform Process becomes available, the specified conversion module is called. When the transform has successfully completed, the output is routed to the appropriate printer, folder or FTP server. If an error occurs during a transform, then the input file and the log files associated with it are placed in an error directory for further analysis.

Intuitive Graphical User Interface

PRO Transform Manager contains a Graphical User Interface (GUI) which allows a user to easily see the status of jobs in the system.

Route Legacy Applications through One System

Each Input Queue can have its own job options that will apply to all files processed from that directory. There can be an unlimited number of watched directories, which will allow you to route all your legacy applications through one system for transformation.

Split Statements and route to Website, Database or Archive

Using **PRO Transform Manager** in combination with PRO Meta Normalization and Indexing Facility and PRO Meta to PDF, metacode from a mainframe can be split into thousands of statements and the output transformed into individual PDF files and automatically routed to a website, database or archive.

Run on Multiple Platforms

PRO Transform Manager runs on a multitude of platforms including Windows, AIX, Solaris and Linux. This ensures that you have a choice of platforms.

Superlative Support

Crawford Technologies believes in providing superlative support for all our products. We offer telephone hotline support for problem reporting and product inquiries as well as FAX and e-mail support. Our online Knowledgebase provides access to our incident reports and change logs 24 by 7. Our extensive front line experience and in-depth product knowledge allow us to respond quickly with solutions.

For organizations who need support around the clock, our Premium Support Plan provides full 24 X 7 support.

Features & Benefits

Automate Conversion and Save Money

PRO Transform Manager automates the conversion of print output, while at the same time maintaining flexibility, fidelity and performance at a fraction of the cost of similar systems.

Automated Directory Watch Capability

PRO Transform Manager provides an automated directory watch capability that manages the conversion of documents. Input is selected from watched directories; automatically converted to other formats such as PostScript, AFP, Xerox Metacode and LCDS, PCL or PDF and routed to the appropriate directory, printer or FTP server. This saves you significant time.

Multiple Printers and Environments Supported

Support is provided for multiple printers and environments where there are different START commands for different applications. This gives you the utmost in flexibility.

Legacy Applications Routed through One System

With **PRO Transform Manager**, there can be an unlimited number of watched directories, which will allow you to route all your legacy applications through one system for transformation. This can save you money because you need not buy multiple systems for each data type.

Passthrough Queues

PRO Transform Manager has a Passthrough capability so that it can be used as a print server to manage all your print output.

Output Routed to Either Directory, Printer or FTP Server

When **PRO Transform Manager** finds a file for transformation and routing in a watched directory, the specified conversion module is called and the output is routed to the appropriate file, printer or FTP server. This gives you the utmost in flexibility.

Statements Split and Automatically Route to Website, Database or Archive

Using **PRO Transform Manager** in combination with PRO Meta Normalization and Indexing Facility and PRO Meta to PDF, Xerox metacode from a mainframe can be easily split into thousands of statements. The output can then be transformed into individual PDF files and automatically routed to a website, database or archive. This is an easy way to split files and transform them to PDF for web presentation.

AFP Support

With the PRO AFP products installed, **PRO Transform Manager** can manage conversion and splitting of AFP files.

Seamless Integration with the Xerox DocuPrint or DocuSP Controller

PRO Transform Manager can reside on Unix or Windows-based printer controllers such as the Xerox DocuPrint or DocuSP Controller. Files can be sent from a Host system to **PRO Transform Manager** running on the controller where they are automatically converted to PostScript or PCL and then automatically routed to any number of printers.

Lights Out Operation

PRO Transform Manager provides lights out operation with its automated directory watch capability that manages the conversion and routing of documents. This saves you time because your documents are automatically transformed and sent to the appropriate output without your intervention.

Intuitive Graphical User Interface

With **PRO Transform Manager**, an operator can easily monitor the conversion and printing task. The user can hold and release jobs and queues and move jobs from one queue to another.

Platform Independence

PRO Transform Manager runs on a multitude of platforms including Windows, AIX, Solaris and Linux. This ensures that you have a choice of platforms.

Product Specifications

Output Formats

PRO Transform Manager allows applications to be converted from and to any supported format, including Xerox metacode, PostScript, AFP, PCL, ASCII, XML or PDF for output to a printer, a folder or an FTP server.

Transform Control Options

PRO Transform Manager has been designed to be a very powerful tool. It has an extensive set of control options which can be used to adapt to many different environments and uses.

Retain Queues

Queues can be configured with a retention directory. The input files will then be placed in the retain directory in case they are needed later.

Retain File Management

Retain Queues can have a retention period and size set so that the files are kept for a specified period. The CTARCMAN Management program can be configured to automatically manage these files.

Supported Transforms

PRO Transform Manager is designed to work with any of the PRO suite of products. These software products can convert print files from one format to another, extract data from print files, split files into subdocument files, index print files and convert files into PDFs. **PRO Transform Manager** can also support other tasks, scripts and programs which may manipulate or convert the input files. These are called Transform Processes or just Processes.

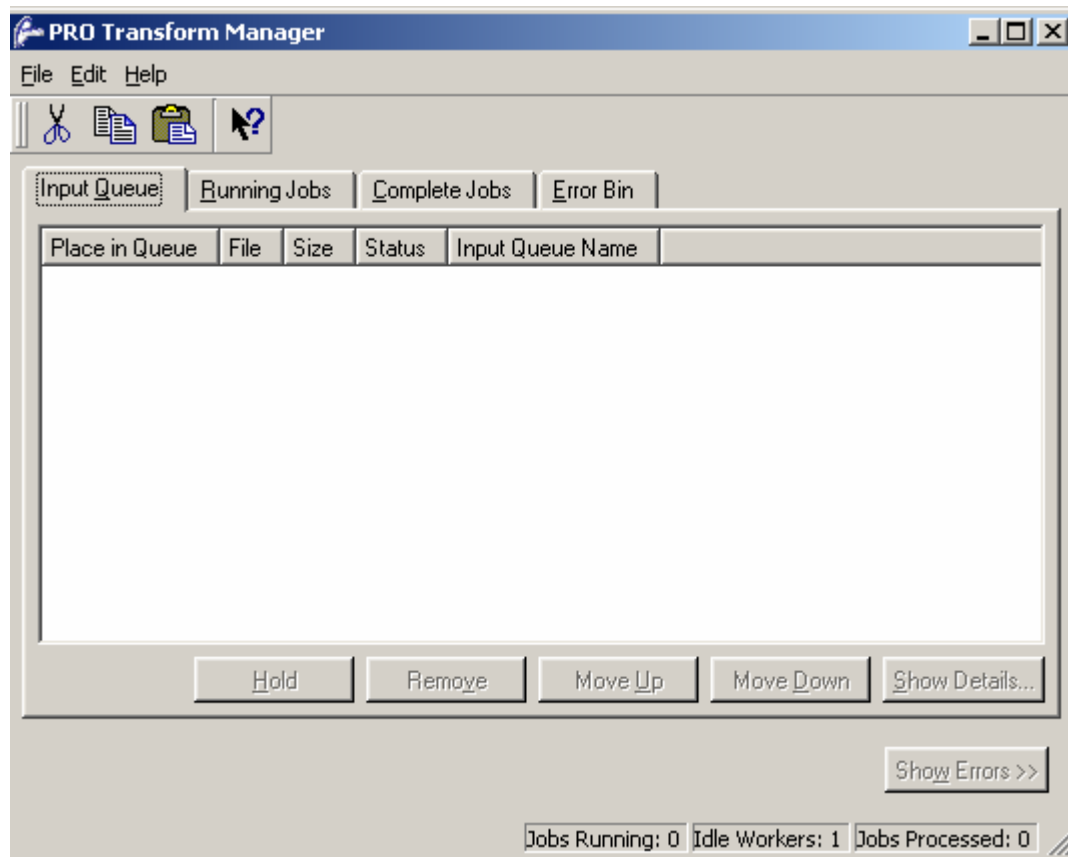
PRO Transform Manager supports the following transforms:

- PRO AFP to PDF
- PRO AFP to PS
- PRO AFP to Metacode
- PRO Meta to AFP
- PRO Meta to PCL
- PRO Meta to PDF

- PRO Meta to PS
- PRO Meta Normalization and Indexing Facility
- PRO PS to AFP
- PRO PS to Metacode
- PRO PCL to AFP
- PRO Print File Concatenate (pfcats)
- PRO Print File Reformatter (rcopy)
- Any conforming process including VBScript processes

Intuitive Graphical User Interface

PRO Transform Manager contains a Graphical User Interface (GUI) which allows a user to easily see the status of jobs in the system. The user can see a list of the jobs in the Input Queue, and examine and change their attributes. The user can see a list of files that are currently being converted and monitor their progress. As well, the user can also see a list of the files which have already been processed and look at the log files created by these transforms.



Graphical User Interface-Style Configuration file

The **PRO Transform Manager Configurator** makes it easy to configure the **PRO Transform Manager**.

Input Queue Configuration

Each Input Queue can be configured by the Work Selection List. The Work Selection List is a text file that specifies the criteria for selecting work from a watched directory, the PRO conversion configuration options and the parameters to be used when routing the converted output files.

Run on Multiple Platforms

PRO Transform Manager runs on the following platforms:

Windows XP, NT, 95, 98, 2000
AIX
Solaris
Linux

Mainframe Integration

PRO Transform Manager can be integrated with IBM mainframe spool queues through several options:

- PRO JES to FTP can select output from the JES queues and send these datasets to PRO Transform Manager for conversion, printing and distribution.
- BARR Bus & Tag channel adapters can be used to convert the PRO Transform Manager system to a mainframe for print file capture.

System Requirements

Software Prerequisites

PRO Transform Manager runs on the following operating systems:

Windows

Windows XP, NT, 95, 98, 2000, ME, 2003

AIX

AIX, versions 4.2, 4.3 and 5.x

Unix

Solaris, versions 2.6, and up.
Linux Red Hat

Hardware Prerequisites

Computer

PRO Transform Manager requires a computer capable of running the software described above.

Network

The host can be connected to the system using any attachment methodology that allows data to be sent from the host to the printer or to an FTP server without translation. This includes TCP/IP, and other LAN/WAN links.

